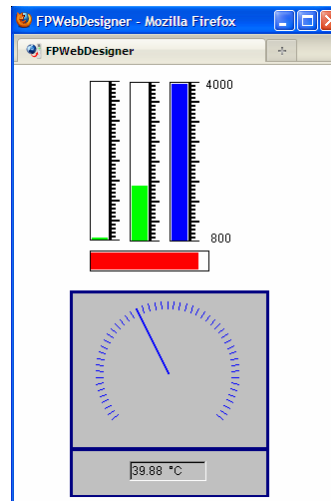
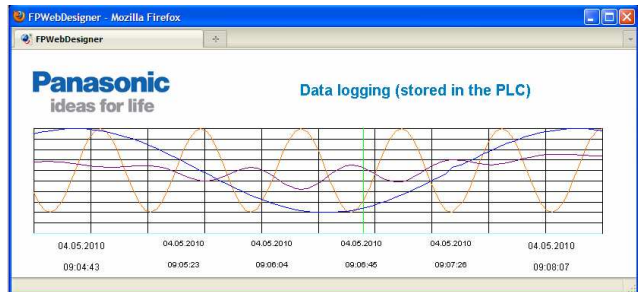
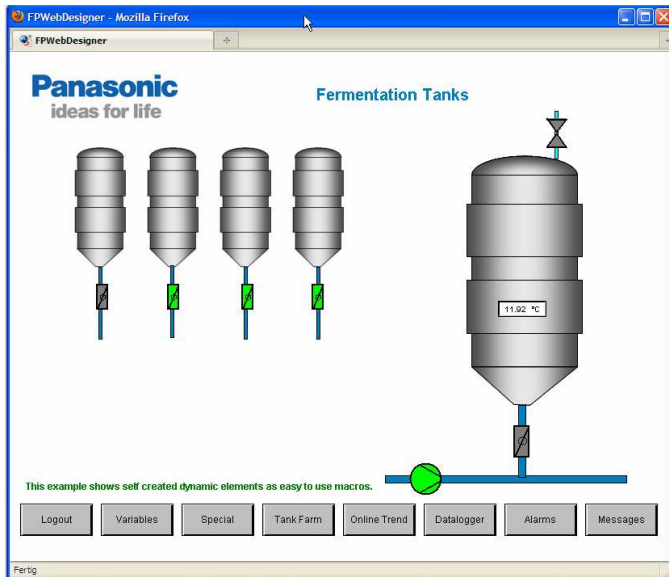


Product Information

FP Web Designer Website editor for FPWEB2

FP Web Designer is an easy-to-use editor tool with which user can create Website for visualizing all process graphics and displaying process data collected by FP Web Server. No programming knowledge for HTML, PHP, JavaScript or Java is required! Extensive graphic libraries help users with their design work.



Features of FP Web Designer

- WYSIWYG (What you see is what you get) editor for graphic design of applications
- The designed page can be retrieved via Web browser on any PC connected to LAN or WAN. All the process values are shown automatically on screen.
- Each diagram can display up to 5 trend curves for measured value stored in PLCs. Update in designed page needs only a mouse click.
- The measured values together with trend curves can be stored as CSV files on PC.

- Alarm information can be visualized in web browser and saved on local on PC. The updating of alarm information runs at background so that the web page always displays the latest status without being active all the time.
- The design page in FP Web Designer and web page in browser are protected with passwords against unauthorized access and changes.
- The process values can be taken over from PLC program written with FPWIN Pro via “CSV import”
- Extensive and expandable macro libraries available
- Online help in English and German available

Part number	Description	Comments
AFPS36510-E	FP Web Designer, economy edition	limited for 250 process points, 15 views, 1 offline trend+ 1 alarm, print not included
AFPS36510-B	FP Web Designer, basic edition	FP Web Designer, limited for 500 process points, 30 views, 3 offline trends+ 1 alarm, print not included
AFPS36510-X	FP Web Designer, extended edition	No limitation
AFPS36510-E2B	FP Web Designer, upgrade from economy to basic edition	
AFPS36510-B2X	FP Web Designer, upgrade from basic to extended edition	
AFPS36510-E2X	FP Web Designer, upgrade from economy to extended edition	